

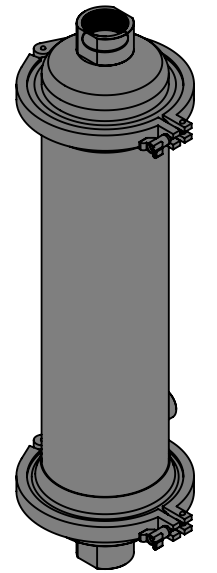
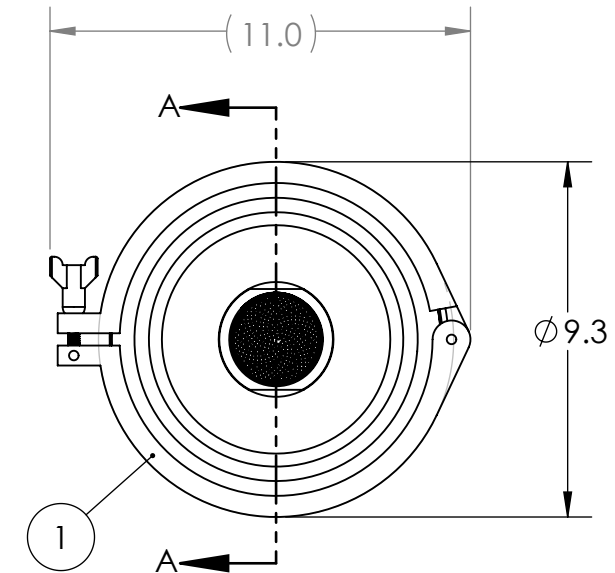
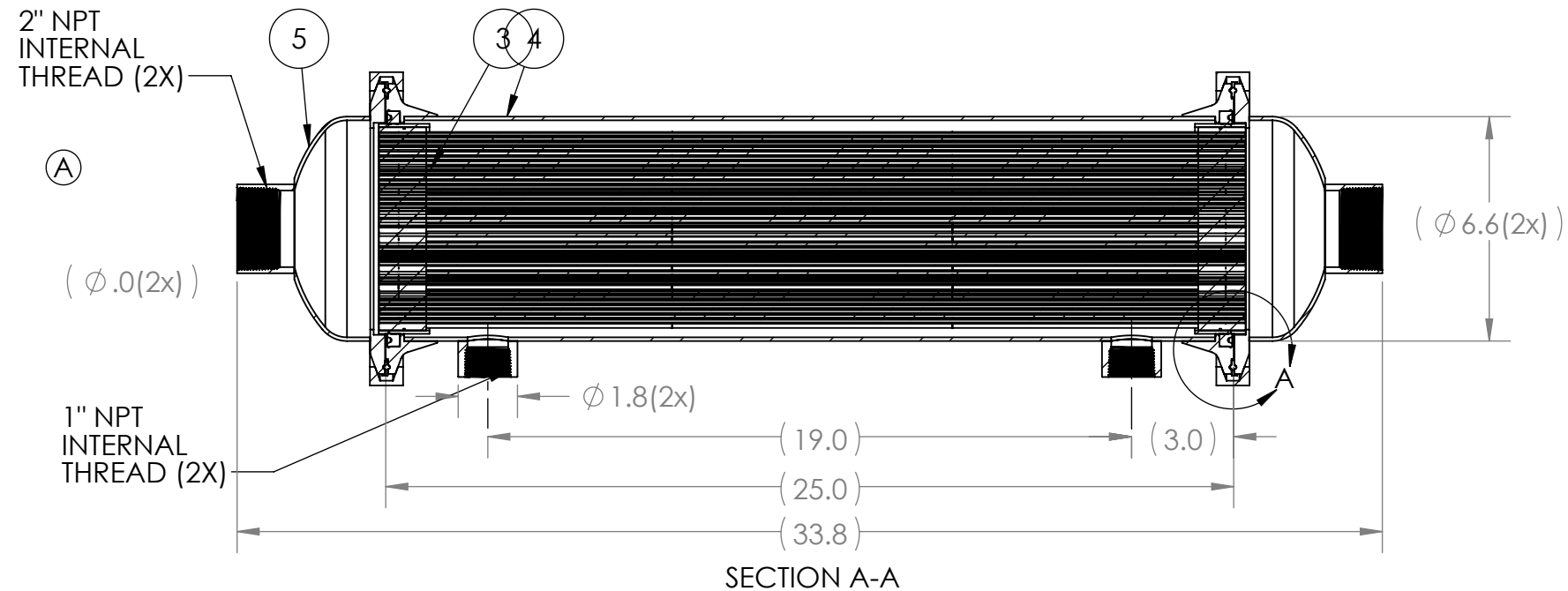
4

3

2

1

REVISIONS				
ZONE	REV.	DESCRIPTION	DATE	APPROVED
B4	A	PART REPLACED WITH NEWER VERSION (FLATS REMOVED FROM END CAPS)	2/5/2018	



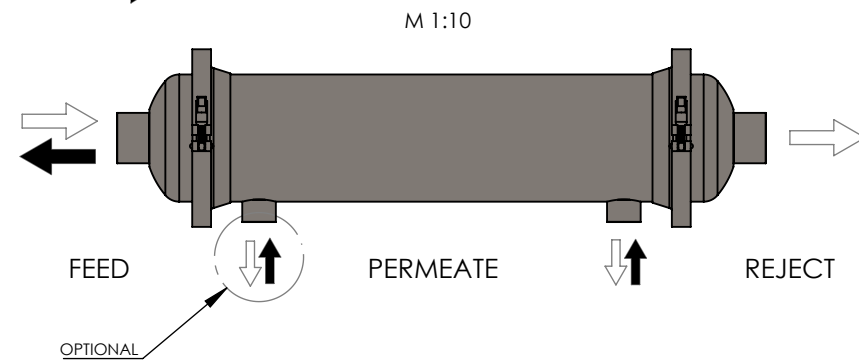
M 1:10

SECTION A-A

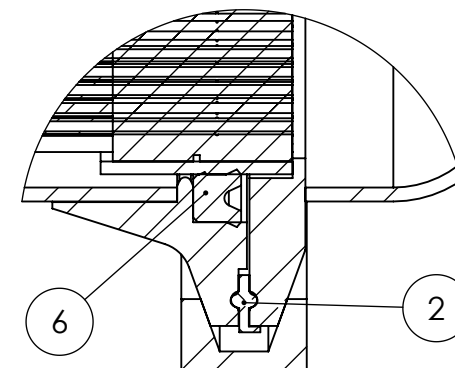
FLOW DIRECTIONS

OPERATING:

BACKFLUSH:



M 1:10

DETAIL A
SCALE 2 : 3

PRODUCT NOTES

- APPLICATION: INDUSTRIAL WASTE WATER TREATMENT
- FILTER TYPE: CHFМ (CERAMIC HOLLOW FIBER MEMBRANE)
- MEMBRANE NOMINAL PORE SIZE: 80 nm
- EFFECTIVE FILTRATION AREA: 4.0 SQUARE METERS MIN.
- FILTRATION TYPE: CROSS-FLOW, IN-OUT
- OPERATING PRESSURE: MAX 3.0 bar
- OPERATING TEMPERATURE: 5°C TO 90°C
- OPERATING TRANSMEMBRANE PRESSURE (TMP): MAX 2.0 bar
- pH STABILITY: 2 - 13
- BACK WASH PRESSURE: MAX 3.5 bar (NO BACK HAMMERING ALLOWED)
- CLEAN WATER FLUX: >3300 l/h AT 1 bar TMP
- STORAGE AND TRANSPORT TEMPERATURE: -30°C TO 60°C
- NO FREEZING ALLOWED IN WET CONDITION
- MUST BE CLEANED, COMPLETELY DRIED BEFORE STORAGE AND TRANSPORT
- ALL PORTS MUST BE CAPPED DURING STORAGE AND TRANSPORT
- DO NOT DROP, TAKE CARE WHILE HANDLING CERAMICS

GENERAL NOTES:

PARTS MUST BE FREE OF BURRS, TOOL MARKS OR FLASHING WHICH MAY BE DETRIMENTAL TO SATISFACTORY ASSEMBLY, SAFE HANDLING, APPEARANCE OR FUNCTIONS.

UNLESS OTHERWISE STATED:
FRACTIONS $\pm 1/16$ ANGLES $\pm 1^\circ$
DECIMAL
1 PLACE $\pm .1$ 2 PLACE $\pm .05$
3 PLACE $\pm .005$ 4 PLACE $\pm .001$

ITEM NO.	PART NO.	PART NAME	DESCRIPTION	MATERIAL	QTY.
1	1700-0140-S00	CLAMP, TRI	13MHHM-H HEAVY DUTY	SS 304	2
2	1700-0141-S00	SEAL	8" PIPE SANITARY SEAL	EPDM	2
3	1702-0153-S00	FILTER CARTRIDGE	80nm PORE SIZE		1
4	1702-0129-S00	HOUSING	CERA~DUR 6 S	SS 316L	1
5	1702-0131-S01	END CAP	2" NPT INTERNAL THREADED PORT	SS 316L	2
6	1700-0142-S00	SEAL	CARTRIDGE U-CUP	EPDM	2

CAD System: Solidworks18 Measurements in Inches

NAME	DATE	TITLE:
DRAWN JUSTIN D.	7/12/2018	CERA~DUR 6-80S MODULE
CHECKED		
ENG APPR.		
PROPRIETARY AND CONFIDENTIAL THE INFORMATION CONTAINED IN THIS DRAWING IS THE SOLE PROPERTY OF i-2-m. ANY REPRODUCTION IN PART OR AS A WHOLE WITHOUT THE WRITTEN PERMISSION OF i-2-m IS PROHIBITED.		Innovation to Market i-2-m.com DWG. NO. 1702-0149-S01 MATERIAL: SEE BOM
SCALE: 1:5	WEIGHT: 56 ± 2 lb	SHEET 1 OF 1

4

3

2

1